

# Pretty face<sup>UP</sup>

REPEAT

DOWN

COMP

STOP

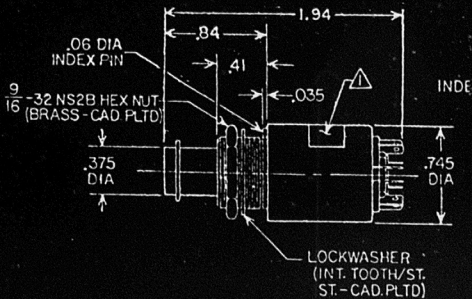
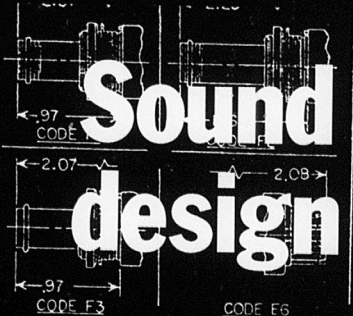
YES NO

OUT

A B  
C D

1 2

# Sound design



- | CODE | MODIFICATION DESCRIPTION  |
|------|---|
| *D4  | O-RING (ETHYLENE PROPYLENE) ON PLUNGER, EPOXY S1  |
| *D5  | SILICONE RUBBER BOOT, SEALED AT CASE NECK, REAR: EPOXY SEALED BASE  |
| E3   | SWITCH CONTACTS AND TERMINALS GOLD PLATED FOR S1 RESISTANCE APPLICATIONS AND GREATER SOLDERABILITY  |
| E4   | PROVIDES LAMP CIRCUIT WITH MAKE & BREAK CONTACT OF SWITCH CONTACTS. LAMP GOES ON WHEN PLUNGER PRESSED, GOES OFF WHEN PLUNGER IS RELEASED. |
| E5   | ALL NORMALLY OPEN SWITCH CONTACTS CLOSE BEFORE CLOSED CONTACTS OPEN.  |
| E6   | PROVIDES SWITCHLIGHT TERMINALS THAT ACCEPT AMP RECTIFIERS (0.016 TAB STYLE A).  |
| F1   | SINGLE LIGHT GANGSWITCH MOUNTING (MECHANICALLY PROVIDES PLUNGER LENGTHENED 0.125 IN.. PLUNGER: SPANNER NUT FOR MOUNTING.                  |
| F2   | MULTI-LIGHT GANGSWITCH MOUNTING (MECHANICALLY PROVIDES PLUNGER LENGTHENED 0.312 IN.. PLUNGER: SPANNER NUT FOR MOUNTING.                   |
| F3   | GANGSWITCH (NON-INTERLOCKED). PROVIDES PLUNGER 1.0125 IN. AND SPANNER NUT FOR MOUNTING.   |
| F4   | SWITCHLIGHT FINISHED WITH ROUND SPANNER NUT IN STANDARD HEX NUT.  |
| G2   | SWITCHLIGHT SUPPLIED WITH LOWER (16 Q2) OPERATING   |

## Just what you'd expect from CLARE.

**Bright. Handsome. And functional.**

Clare switchlights and gangswitches offer wide versatility to the front panel designer to meet most human engineering requirements. And behind the visual esthetics are the reliability, practical design and manufacturing skills that mean quality that is usually found only in custom switchlights. Just what you'd expect from Clare. Write

or call for complete details on the Pendar series switchlights and gangswitches. C. P. Clare & Company  
3101 W. Pratt Avenue, Chicago, IL 60645. (312) 262-7700.

**We help you compete**

C. P. CLARE & COMPANY  
GENERAL INSTRUMENT CORPORATION

